



CYBERSEC AS A MISSION



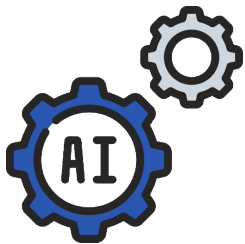


Figure 1: ENISA Threat Landscape 2022 - Prime threats



Figure 2: Breakdown of analysed incidents by threat type (July 2022 till June 2023)

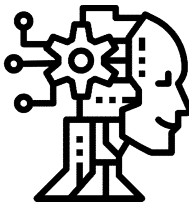
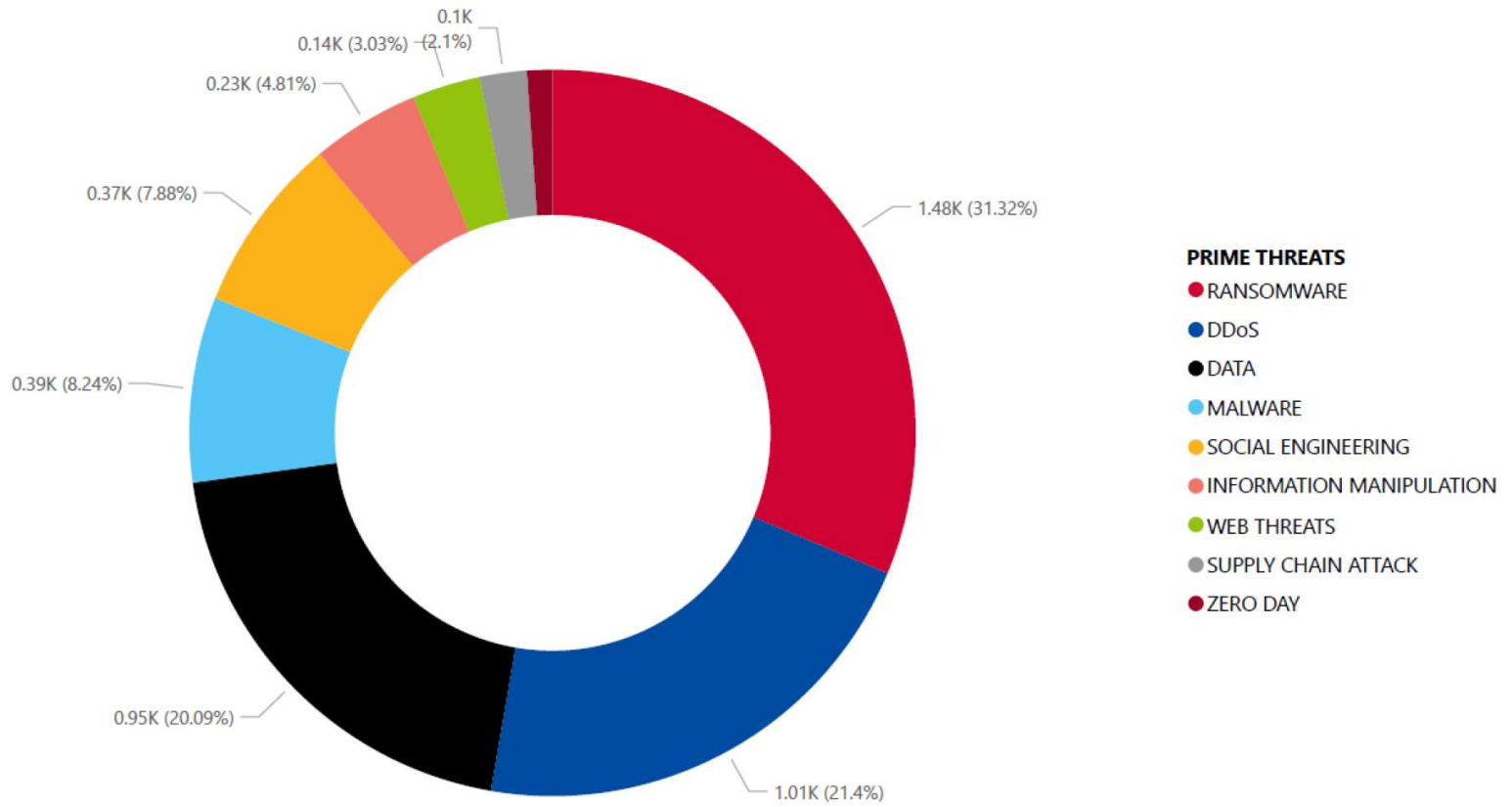
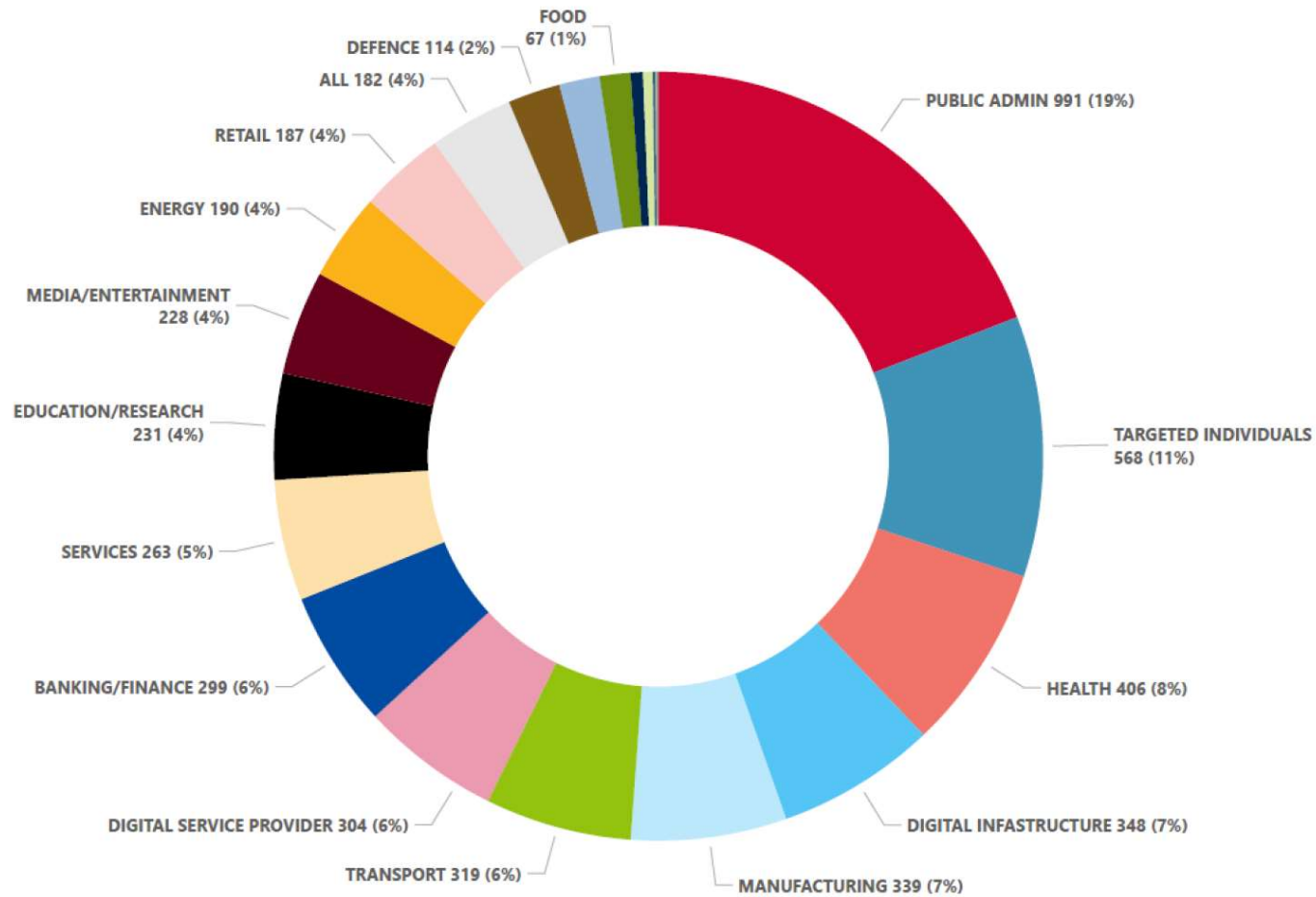
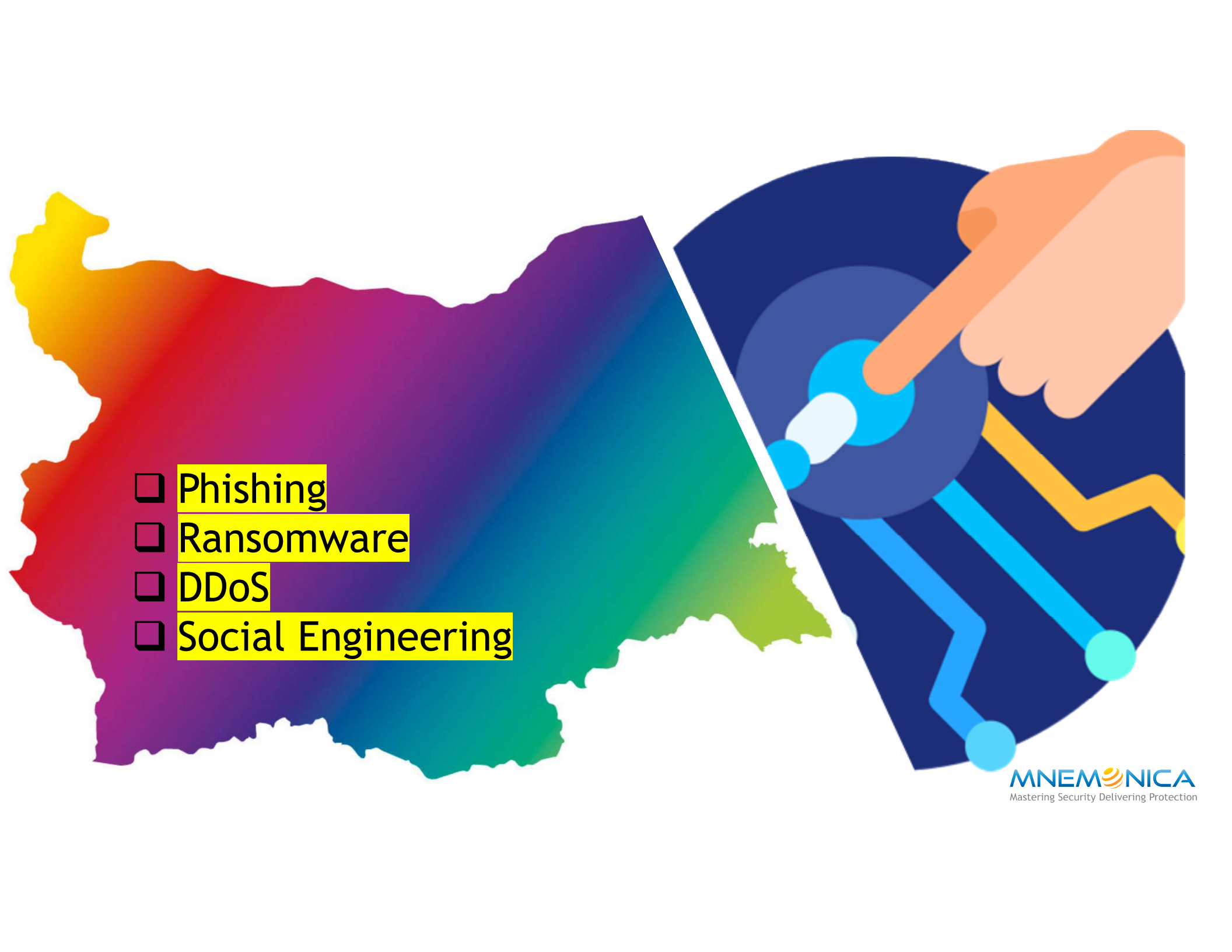


Figure 6: Targeted sectors per number of incidents (July 2022 - June 2023)



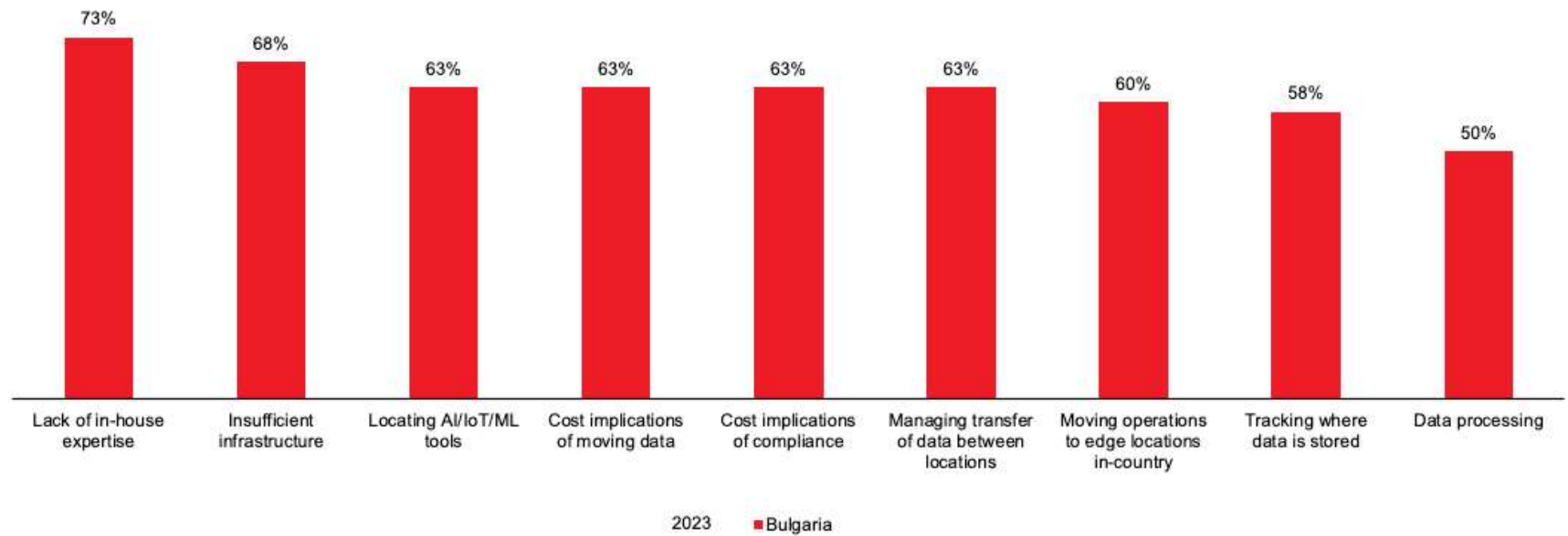
- 
- ❑ Phishing
 - ❑ Ransomware
 - ❑ DDoS
 - ❑ Social Engineering



Evolving data sovereignty regulations

How prepared are you in each of the following areas to deal with the challenges of complying with incoming or more strict data sovereignty regulations?

Total of "not very prepared" (0-7) on a 0-10 scale



QDR, NEW: How prepared are you to deal with the challenges of complying with incoming or more strict data sovereignty regulations and in which areas is there work to be done?

idih



*Thank you &
Stay RESILIENT!*